



Dear Friends:

St. Catherine of Siena Parish is one of the most active parishes in the diocese. There are so many ministries and programs for parishioners of all ages, and growing numbers of people are taking advantage of these opportunities to strengthen their faith, and strengthen our “parish family.”

Our “community” has been growing and changing. While we have many young families, we also have a growing population of seniors.

It is time now for us to make improvements to some of our parish facilities, in particular accessibility issues for the church and church basement. St. Catherine’s Building Committee has worked diligently to identify facility needs and has enlisted the services of an architect.

We are now in the midst of our capital campaign approaching all parishioners and friends to seek their thoughtful support, as we are doing with you.

We are grateful for the opportunity to share with you our mutual love for St. Catherine of Siena Parish and the plans for the future, and we invite your participation.

“Be who God meant you to be and you will set the world on fire.” (St. Catherine of Siena)

*Father Paul*



“We’re honored to be doing our part in helping make St. Catherine’s an accessible, safe and welcoming environment for all.”

~ BARBARA & PETER LETVINCHUK  
CAMPAIGN CO-CHAIRS

**T**oday this wonderful parish, reaping the benefits of priests and parishioners of the first 59 years, continues to “ensure that lives are enriched in this life and that souls are saved for the afterlife.”

Pastor and parishioners accomplish this through a myriad of ministries and programs and a school that thrives with 330 students. This is all to benefit each member of this richly diverse congregation, from the young to the elderly, and together to glorify the Lord Jesus Christ.

St. Catherine of Siena Church, the center of spiritual life for this community of faith, has served its people well thanks to those who built this beautiful building, improved it over the years, and maintained it throughout that time. Now, it is time to make improvements to the church to benefit the current congregation and the generations to come.

Plans are to conduct a capital fundraising campaign and to address some essential needs in both the church and church basement.

The entire construction project will be addressed in two phases. Our goal for this campaign is \$1.7 million, allowing us to address phase I of the project.

## PHASE I

- A gathering space in the church (parking lot side)
- Installation of an elevator to enable everyone to access the worship space and church basement
- Handicapped accessible bathrooms on main level and church basement
- Improved heating system
- Installation of a safety sprinkler system in the basement

By exceeding our campaign goal, we will begin to address the items in phase II of the project, including renovations to the church itself.



## PHASE II

- Move altar back towards Sanctuary and, instead of square, make it round and all on one level which will be one step higher.
- Sanctuary will be wheelchair accessible.
- Tabernacle will move to Sanctuary.
- Reconciliation room will move from back of church to area of existing chapel.
- New Baptismal font
- New Sanctuary furniture
- New Altar
- Choir will move to opposite side of church.
- New flooring
- Re-finish pews and repair as needed.
- Re-space pews.
- Seating at existing choir area will be chairs similar to what is there.
- Handicap seating in various places in the congregation, not just up front.
- The wall between existing reconciliation room and Mother’s room will be removed and a new glass wall installed with glass doors.
- Exact configuration of entrance area to be determined, but it will include some special seating for families with young children who desire such.
- Some new lighting
- New paint

Should there be funds beyond what is needed for phases I and II, stained glass windows will be repaired and replaced where needed.

Memorial/Naming opportunities are available. Please contact the rectory.



“We are proud to support St. Catherine Parish’s campaign to provide handicapped accessibility for all parishioners. This is a sorely needed renovation for this vibrant parish community.”

~ SUSAN KUNKEL AND DR. ALAN STEIN  
CAMPAIGN CO-CHAIRS

# Frequently Asked Questions

**Am I expected to give to the campaign as well as to continue my weekly offering?**  
 Our parishioners are quite generous with their weekly offering, which is how the Parish continues to serve the ongoing daily needs of our congregation. It is essential that the offertory collection continue at its present level to pay for the day-to-day operations of our Parish.

**Am I expected to make a cash gift outright when asked to contribute?**  
 Absolutely **not**. Most parishioners are making a pledge that will be fulfilled over three years. This enables many people to contribute more than would be possible with a single outright gift.

**What if I am unable to complete my pledge?**  
 Your pledge is a personal commitment. Should circumstances not allow you to complete your pledge, or require that you adjust it, simply notify Father Paul.

**Is my contribution tax deductible?**  
 Your charitable gift to St. Catherine Parish is tax deductible to the extent provided by law. This requires that a donor itemize his/her deductions by using the appropriate tax forms.

**Do I have to give cash or is there another way?**  
 While most people give cash in the form of a check, there are other ways to give. A gift of stock or appreciated securities is sometimes more appropriate. It qualifies for the income tax deduction and can avoid capital gains tax. Should you wish to contribute stock, contact Barbara Letvinchuk or the Rectory for transfer instructions.

Sometimes a gift from one's retirement account is advantageous, providing tax benefits. Life insurance, real estate or tangible personal property may be appropriate gift vehicles for some. Legal and/or professional advice is encouraged when considering this type of gift.

**When will construction begin?**  
 As soon as we have raised sufficient funds. Hopefully by Spring 2014.

## For pledges to be fulfilled over 3 years

Pledge Amount	10% Down	36 Monthly Payments	12 Quarterly Payments	6 Semi-Annual Payments	3 Annual Payments
\$100,000	\$10,000	\$2,500	\$7,500	15,000	\$30,000
25,000	2,500	625	1,875	3,750	7,500
15,000	1,500	375	1,125	2,250	4,500
10,000	1,000	250	750	1,500	3,000
6,000	600	150	450	900	1,800
5,000	500	125	375	750	1,500
3,000	300	75	225	450	900
1,000	100	25	75	150	300

*A pledge of \$3,000 is the equivalent of less than \$2.75 per day.*

*A pledge of \$1,000 is less than \$1.00 per day.*

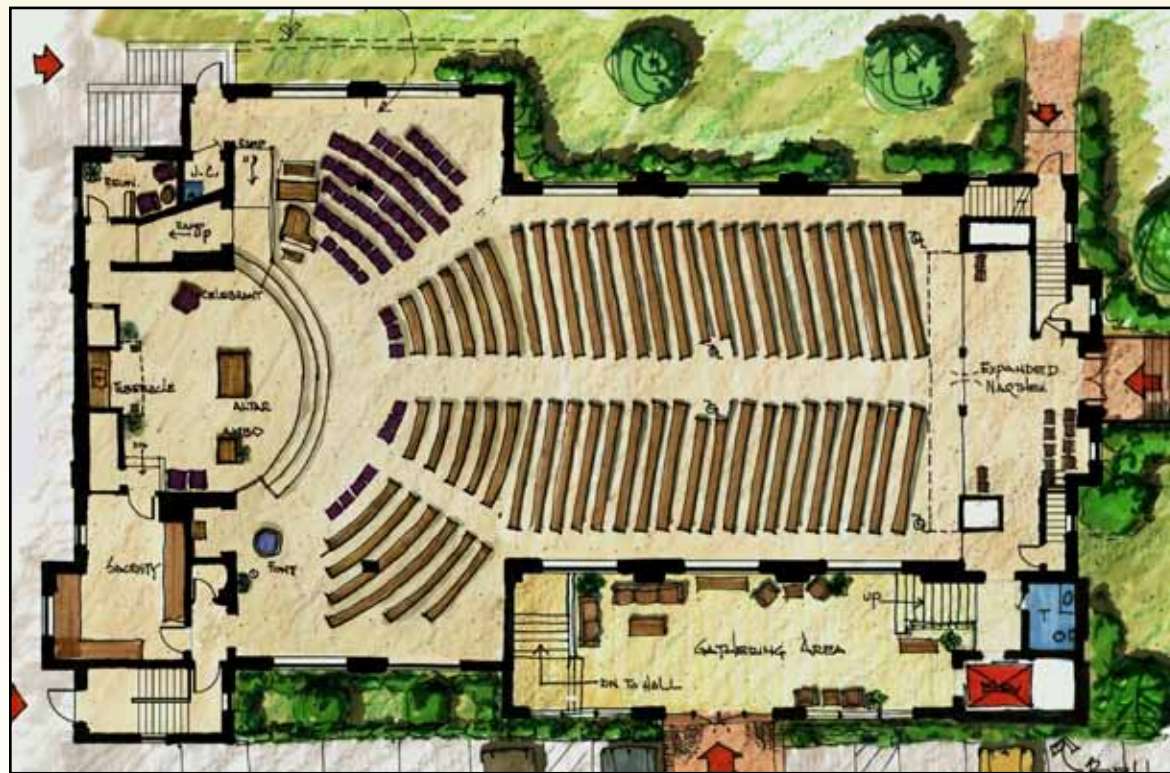
*Whatever the amount, large or small, your pledge will be most appreciated.*

Please make a thoughtful, prayerful pledge to the campaign. Pledges can be fulfilled over 1 – 3 years or as you deem appropriate. Pledge payments can be made annually, quarterly, monthly or through other arrangements. Gifts of appreciated securities are, for some, an advantageous way to contribute. Contact Barbara Letvinchuk or the Rectory for transfer instructions.

# Pledge Payment Schedule

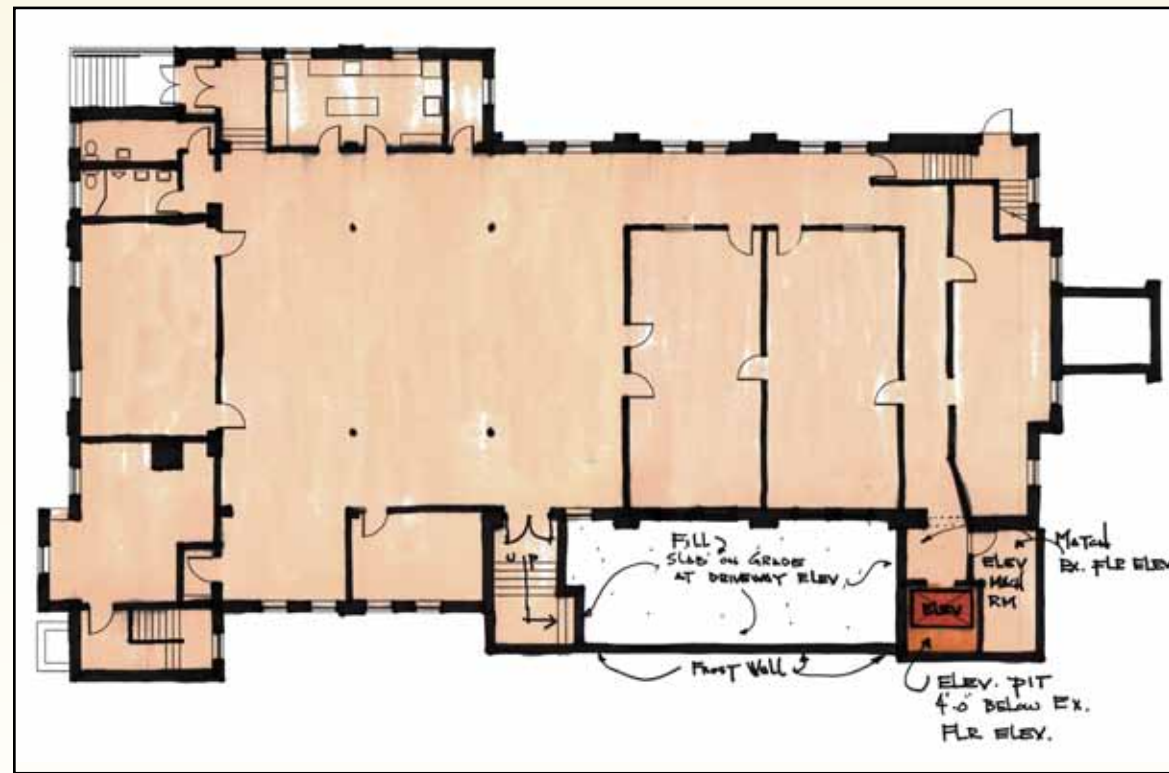
Preliminary  
Design

Floor Plan



Preliminary  
Design

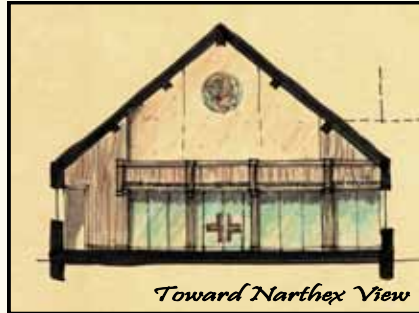
Lower Floor Plan



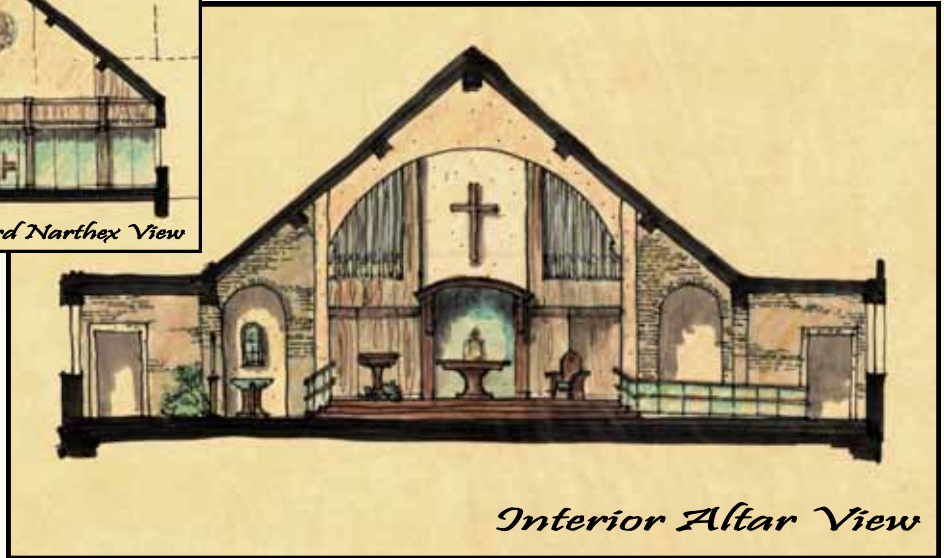


# Preliminary Design

## Altar Views



*Toward Narthex View*



*Interior Altar View*